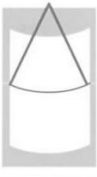


# HEPWORTH MARINE

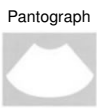
## 30Nm MEDIUM DUTY WIPER MOTOR



The 30Nm is a compact medium duty unit, aimed at the small boat market, where efficient clearing of windows is essential.



Supplied as a variable arc model, 12 & 24 volt DC. The standard motor has two speeds and self parking facility



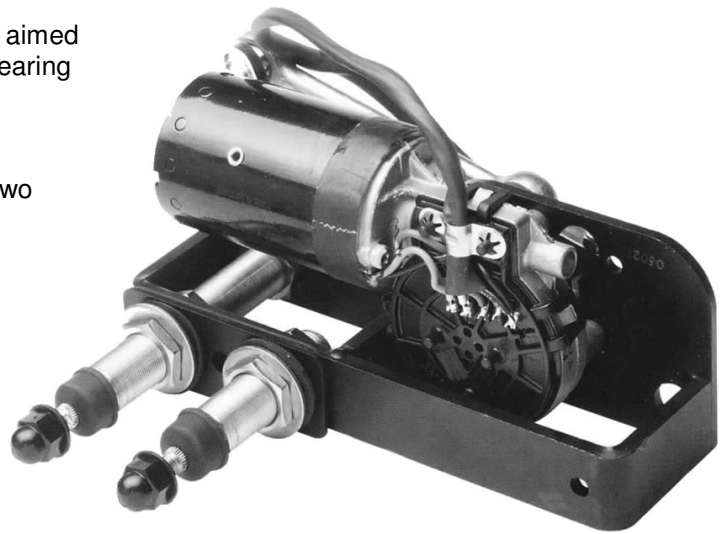
Pantograph

Insulated earth return & EMC filter are std



Pendulum

Pantograph and pendulum arm up to 28 ins. (710mm)  
Blades up to 24 ins. (600mm)



### Pantograph Arms

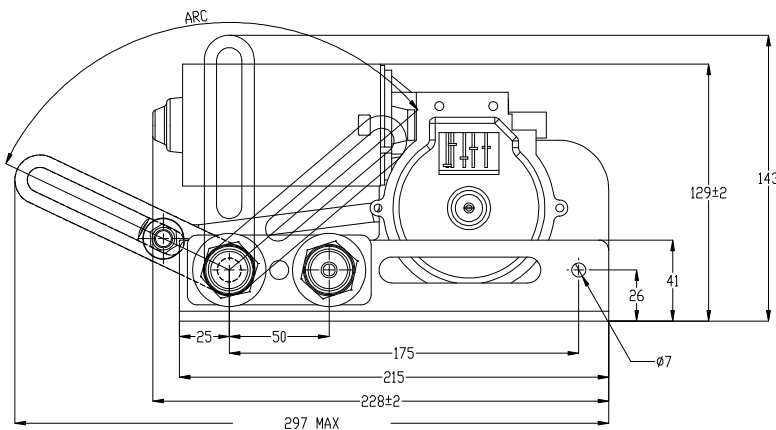
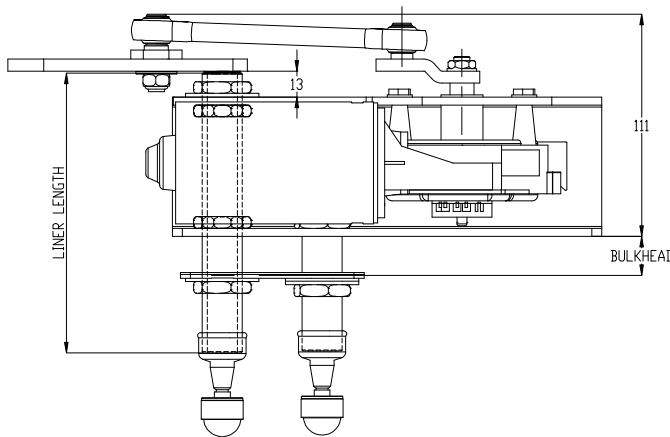
### Pendulum Arms

### Blades

P613 Medium Duty  
Lengths 12" to 28" (310mm to 710mm)  
Blade Clip 14mm

F63 Medium Duty  
Lengths 12" to 28" (310mm to 710mm)  
Blade Clip 14mm

B140 Curved Blade  
Lengths 12" to 24" (300mm to 600mm)  
Blade Clip 14mm



### Specifications

<b>Unit type</b>	30Nm
<b>Voltage</b>	12 & 24
<b>Standard Details</b>	2 Speed, Self parking, Insulated Earth Return
<b>Angles of Arc</b>	Variable at stated angles
<b>Pantograph Units</b>	35 to 90 degrees
<b>Pendulum Units</b>	35 to 120 degrees
<b>Spindle Centres</b>	Between drive & idler 50 or 60mm
<b>Drive liner</b>	M20 Liner / 12mm Spindle
<b>Bulkhead thickness</b>	Suit up to 6mm, 30mm, 55mm, 95mm Longer available on special order
<b>Idler liner</b>	M20 Liner / 12mm Spindle
<b>Unit Weight</b>	At maximum arm & blade Lengths 4 Kgs (8.8 lbs)

